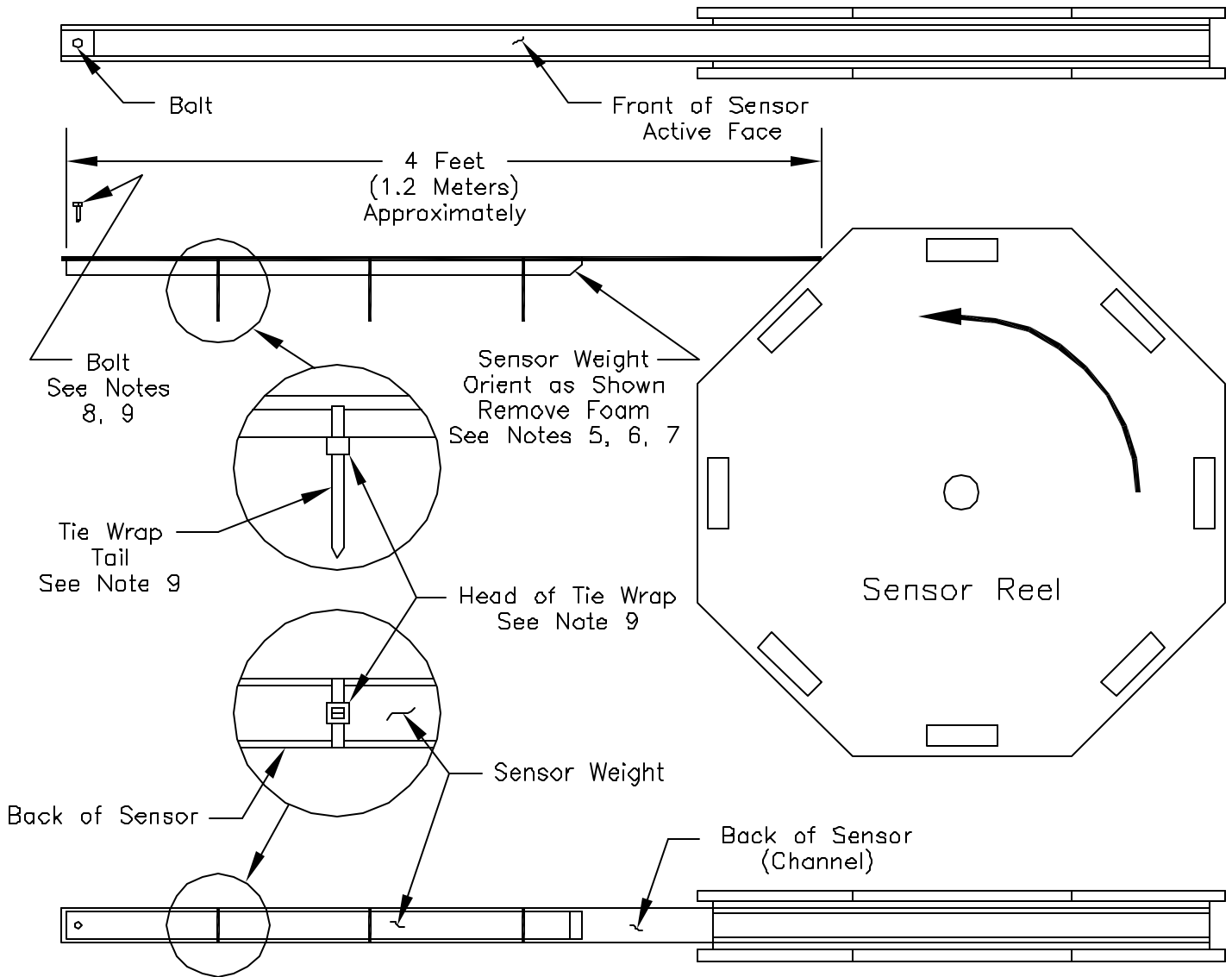


Weight Installation

1. Three people are required to complete this installation.
2. Locate the sensor weight with bolt, shipped separately.
One person should hold the sensor reel in the upright position.
3. **CAUTION** Do not Twist or bend sensor. Sensor will be damaged if twisted.
4. The second person should untie sensor and unreel about 4 feet (1.2 meters).
Remove the plastic bag from the unreeled portion of sensor. The third person should support the end of the sensor during steps 5 through 9.
5. Remove foam piece from sensor by sliding it through the tie wraps and off the end of the sensor. **DO NOT** cut or adjust the tie wraps.
6. Orient the sensor weight so that the chamfer is facing away from the sensor channel as shown.
7. Slide the weight through the three tie wraps, line up the hole in the weight with the hole in the sensor channel.
8. Install the bolt through the hole in the sensor channel and into the sensor bottom weight, tighten finger tight.
9. Tighten tie wraps securely. Make sure the tie wrap head is located in the middle of the weight, when tight. Cut the tie wrap tails flush with tie wrap head. Tighten bolt securely.
10. See sheet 2 for installation into sensor housing.



JOWA Consilium

Installation Instructions
Weighted Sensor

DRN: MAP

6/1/00

A

1924000

REV

A

APPD:MAP

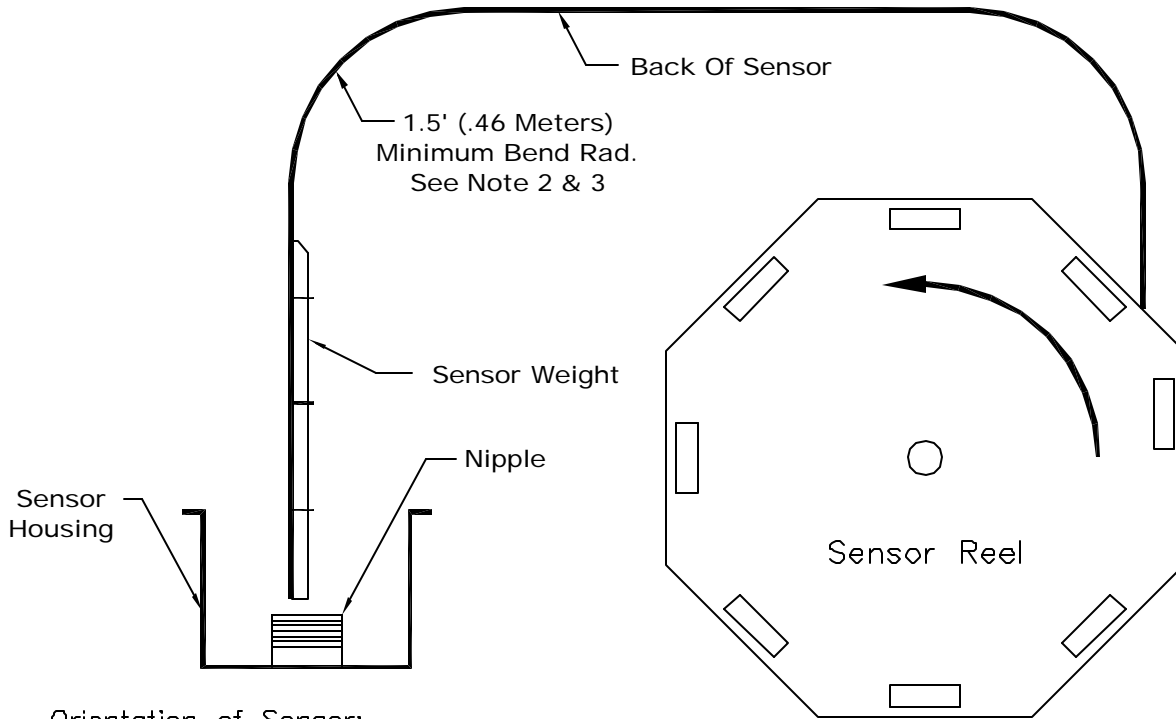
11/29/00

SCALE: NONE

SHEET 1 OF 2

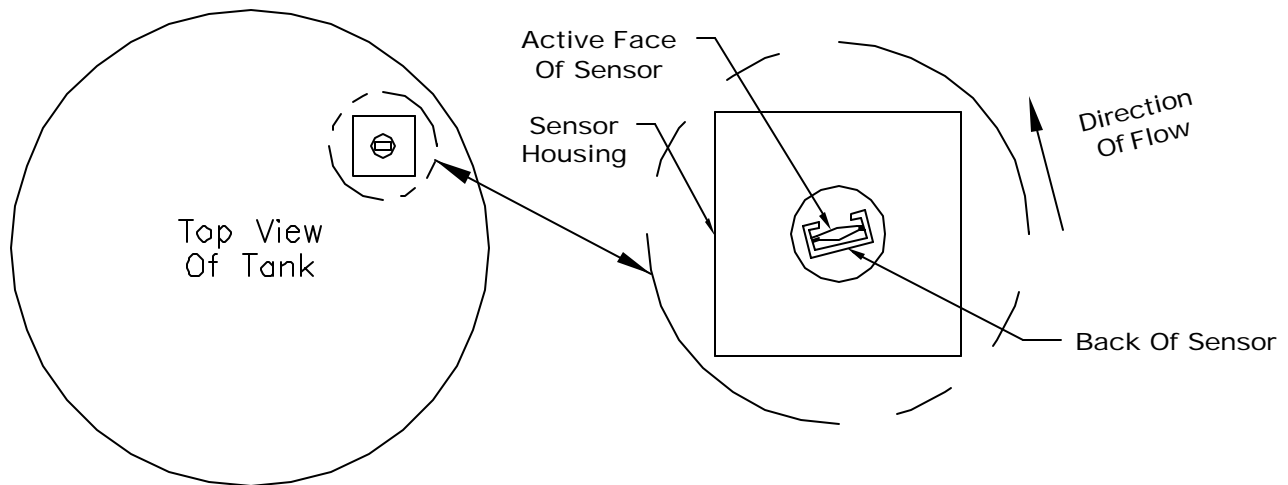
Housing Installation:

1. Three people are required to complete this installation. One person should hold the sensor reel in the upright position.
2. Caution Do Not bend sensor close to the weight. Minimum 1.5 foot (.46 meters) bend radius during installation. Do Not twist sensor during installation.
3. The second person will hold the sensor weight in two hands, and carefully guide the sensor through the nipple in the sensor housing until the sensor head seats on the nipple. Tighten the mounting nut finger tight.
3. The third person should assist unreeling the sensor and make sure that the minimum bend radius requirements are upheld.



Orientation of Sensor:

1. The sensor must be oriented in the housing so that its back surface is in line with the direction of the fluid flow.
2. Once sensor has been oriented the mounting nut can be tightened. The filter can be installed, the electrical connections can be made and the cover of the sensor housing can be installed.



JOWA Consilium Installation Instructions Weighted Sensor	DRN: MAP	6/1/00	A	1924000	REV
	CKD:				A
	APPD:MAP	11/29/00	SCALE: NONE	SHEET 2 OF 2	