

JOWA USA

MetriLink Wireless Base (MWB)



Description:

The MetriLink Wireless Base Radio (MWB) is at the heart of the wireless solution. It communicates with all of the deployed field units and interfaces with an existing control system and/or standalone PC via Ethernet.

One Base Radio can communicate with up to 50 field units. Multiple MetriLink Wireless Base Radios can be used to accommodate larger installations.

Technical Specifications:

Power Characteristics

- External power supply 100 - 240 VAC, .15A, 50/60 Hz

RF Characteristics

- 2.4 GHz spread spectrum, FCC Certified ISM license-free band
- Up to 3000' range to field units with clear line of sight; 500' to 1000' range with obstructions
- The RF module in each unit is individually tested and calibrated to ensure reliable wireless operation

Features:

- Communicates with up to 50 field units
- FCC License-free operation
- Up to 3000' range (clear line of sight) 500' to 1000' with obstructions
- Remotely mounted Antenna options are available to increase range
- Communicates with MetriLink Wireless Transceiver (MWT)
- Connects directly with PC for data monitoring, setup and diagnostics
- Existing control system can be linked to the MetriLink database (Modbus - TCP/IP)
- Mesh network architecture for improved radio communication in difficult areas

Accessories:

- Modbus TCP/IP to Modbus Serial converter
- Ethernet Relays (SNMP)
- Individual Panel Meters with relays (Modbus Snooper)
- Enclosure for mounting in dusty areas
- Lighting protection for remote antenna

Self-Diagnostics

- Contains self-checking software and hardware that continuously monitors the operation. Any sensor or device parameter out of spec is identified and reported

Physical Characteristics

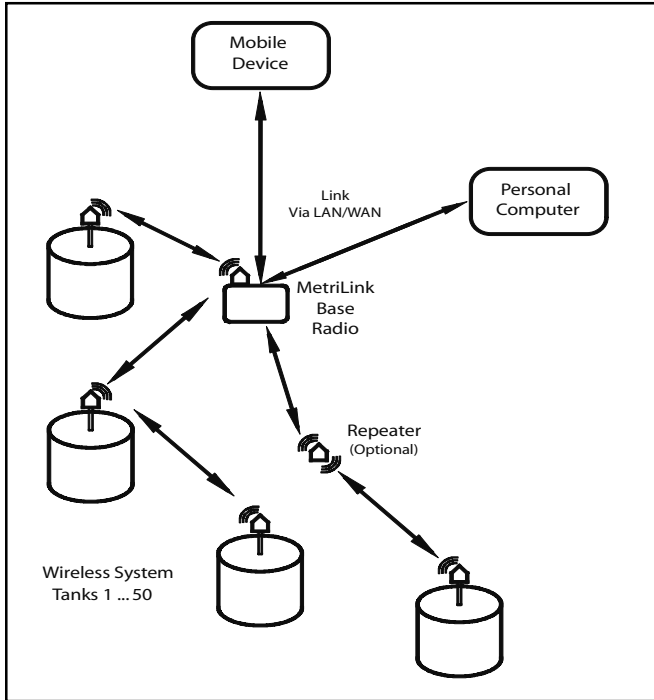
- Nema 3 enclosure for mounting in control room 3.5 x 2.5 x 1.2 inches (8.9 x 6.35 x 3 cm)

Operating Temperature Range

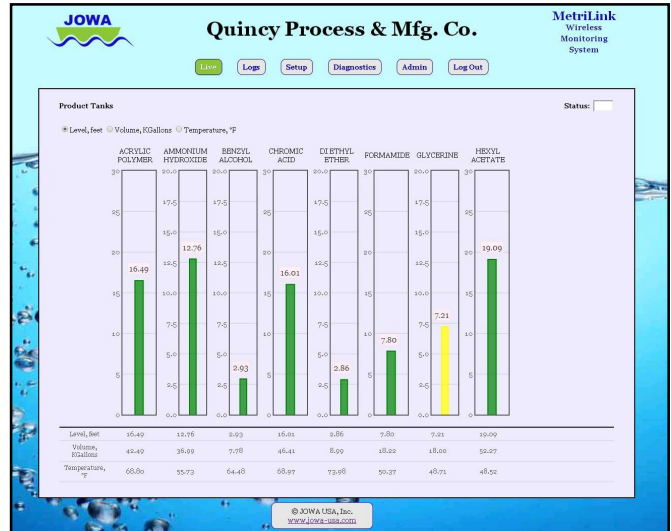
- -22°F to +140°F (-30°C to +60°C)

Weight: 6 oz (170 grams)

MetriLink Wireless Base (MWB)



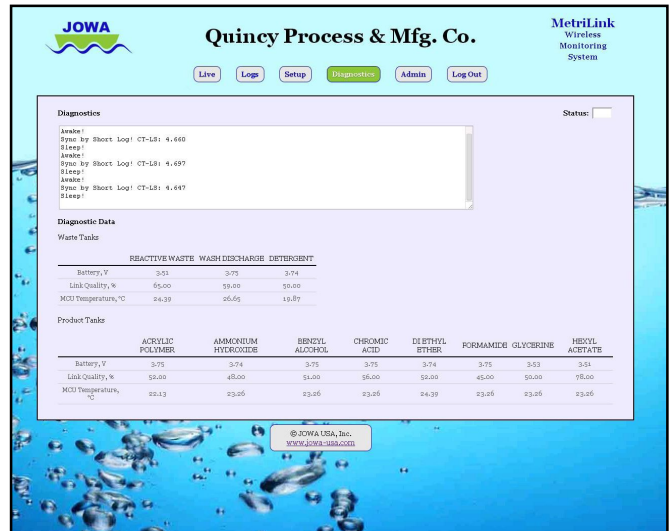
Wireless System



Live Tank Data



System Setup



Built-in Diagnostics

Disclaimer:

This is not a specification and all information is provided in good faith. Since conditions of use are beyond the control of JOWA USA, Inc., the information contained herein is without warranty, whether express, implied or otherwise. Final determination as to the suitability, merchantability or fitness of any information, material or product for a particular purpose, or any patent infringement, is the sole responsibility of the user. JOWA USA, Inc. does not assume liability for injury arising from the use of the information, material or product, and assumes no liability for any damages, whether direct, indirect, consequential, special, incidental, punitive or otherwise. For additional information regarding JOWA USA, Inc.'s limited warranty, refer to the Terms and Conditions that are currently in effect.



JOWA USA, Inc.
 59 Porter Road
 Littleton, MA 01460-1431 USA
 Tel: 978-486-9800 Toll free: 800-861-1560
 Fax: 978-486-0170 E-mail: info@jowa-usa.com
 www.jowa-usa.com